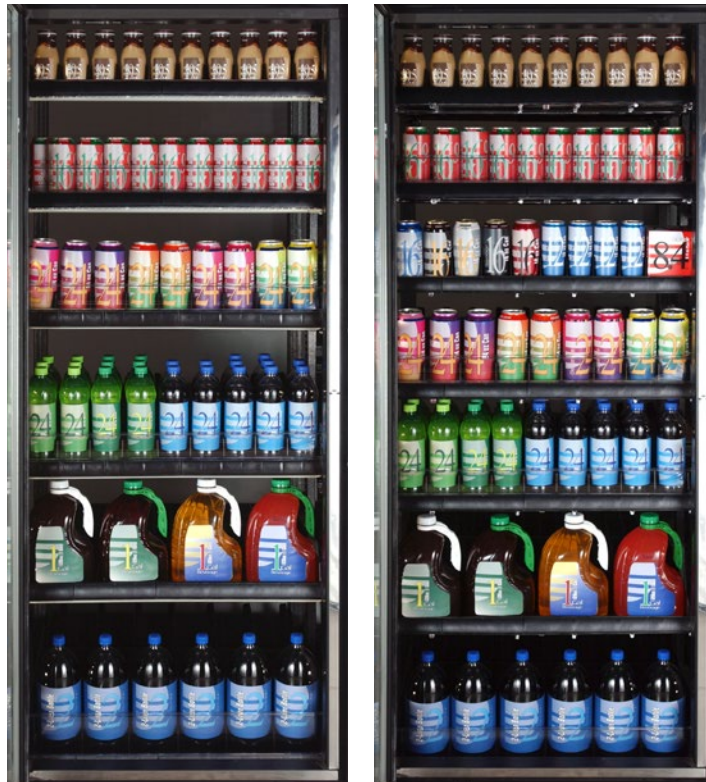


SPACEMAKER®

Maximize Available Space in the Cold Vault.



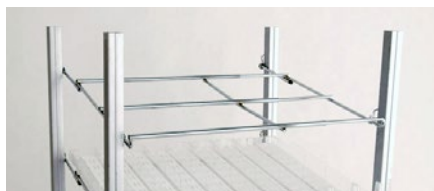
Before

After

FEATURES

- **INSERT AN ADDITIONAL SHELF TO GAIN VERTICAL SPACE** in your existing Cold vault. One additional shelf adds can add 90 cans on a 26" deep shelf
- **GAIN PACKOUT** by converting a standard shelf to an extended depth shelf
- **FOUR EXPANDABLE SPACEMAKER OPTIONS ARE AVAILABLE** to accommodate Cold Vault
- **SPACEMAKERS FIT MOST COMPETITORS'** Cold Vault Merchandising offerings
- Call your PFI Sales Team to obtain additional information and dimensions.

Spacemaker - MNO13900



Ability to adjust width and depth

Modular Spacemaker - MNO13920



Ability to adjust width and depth
**must use with Modular Glide*

Spacemaker Grid - MTO13910

Extended Spacemaker Grid -
MTO13936 (shown)



Ability to adjust width.
Structure allows units to be merchandised
as a shelf with or without a glide or roller



For more information or to place an order, Contact Customer Service: **800-325-2823** | **PFIinnovation.com**

02.16.18

SPACEMAKER®

Product Line	Spacemaker® MNO13900	Spacemaker® Grid MTO13910	Extended Spacemaker® Grid MTO13936	Modular Spacemaker® MNO13920
Images				

Product Dimensions

Floor Width	21" Wide adjusts to 28.5" Wide	21" Wide adjusts to 28.5" Wide	21" Wide adjusts to 28.5" Wide	21" Wide adjusts to 28.5" Wide
Floor Depth	21"	26"	36"	26"

- Mounting hooks have slight adjustability to accommodate attachment to cold vault uprights.

SUGGESTED ACCESSORY PRODUCT OFFERING

Intelli-Roller		X	X	X
Intelli-Glide		X	X	X
Eco+ Cool Glide	X	X		X
Modular Cool Glide		X		X
Extended Depth Cool Glide			X	

SHIPPING INFORMATION

Carton	1	1	1	1
Number Units Per Carton	6	6	1	6
Carton Dimensions L" x W" x H"	23" x 25.5" x 5.25"	28.5" x 22" x 6"	37.5" x 22" x 2.5"	29.5" x 26" x 4.5"
Carton Weight	38 lbs.	58 lbs.	22 lbs.	55 lbs.

ORDERING INFORMATION

Minimum ordering quantity is 1 carton. See chart above for number of items sold per carton.



For more information or to place an order, Contact Customer Service: **800-325-2823** | **PFIInnovation.com**

02.16.18