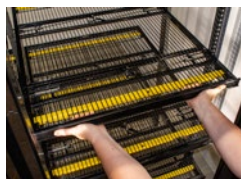


C21™ COOLER 21

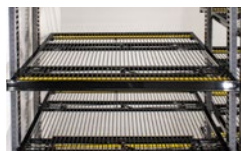
Dynamic Cooler Shelving that Allows One Person to Adjust Fully Loaded Shelves



C21 shown in cooler door



(A) - New C21 Shelf



(B) - Vertical Spacing



(C) - Shelf Strength



(D) - Optional Wall Bracket



(E) - Numbered Uprights

FEATURES

- **NOW EASIER TO USE! INNOVATIVE, SPRING LOADED LEVERS** allow one individual to reposition fully loaded shelves (see image A).
- **TIGHTER RESETS – 3/4" CENTER-TO-CENTER VERTICAL SHELF SPACING** reduces wasted head space. Uprights are numbered to ensure accurate shelf placement.
- **IMPROVED SHELF STRENGTH.** Structural crossbars eliminate warped shelving.
- **INCREASED HORIZONTAL SHELF SPACE** - narrower uprights deliver a combined extra inch of usable horizontal shelf space, affording the potential to gain facings.
- **GREATER PRODUCT VISIBILITY.** The C21 does not need to be mounted to a wall, allowing the unit to be more accurately positioned in alignment with cooler lighting. Product is more illuminated across all facings. For added stability you can secure C21 Uprights with optional wall bracket (see image D).
- **REQUEST A COLD VAULT MERCHANDISING SOLUTIONS BROCHURE** for roller and glide options.
- Call our PFI Sales Team for additional information.



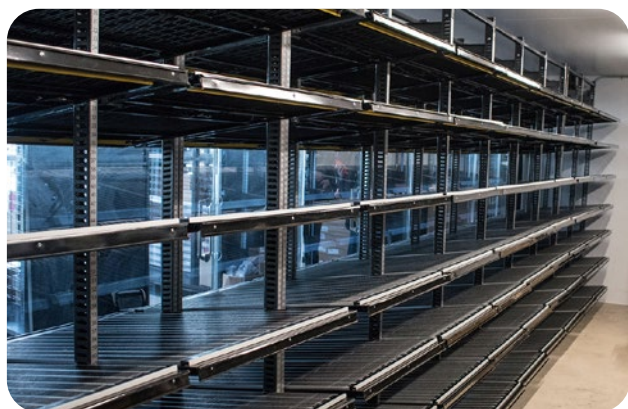
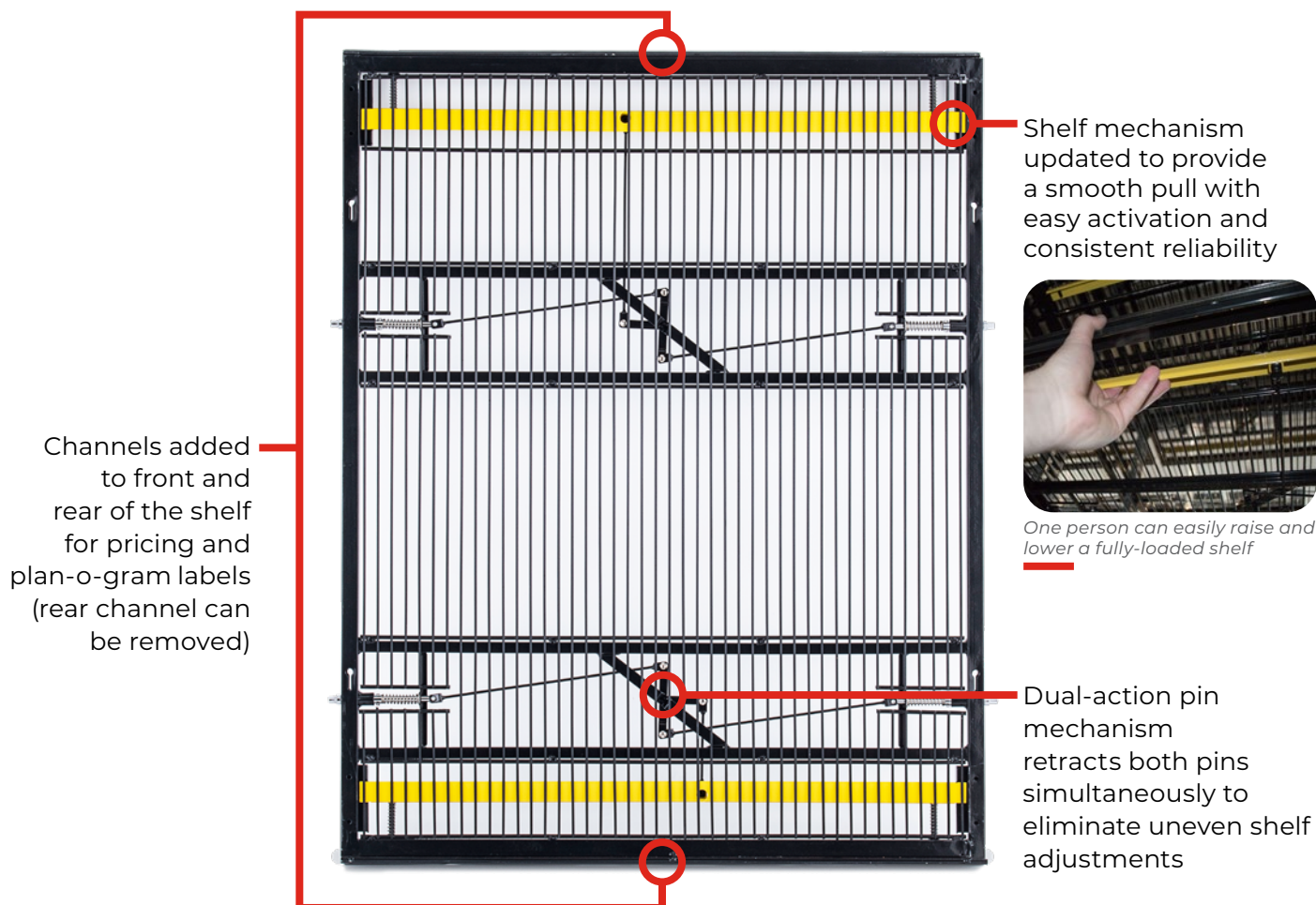
UL Safety Standards
Commercial Test Certified



For more information or to place an order contact Customer Service: 800-325-2823
4847 Park 370 Blvd. Hazelwood, MO 63042 · PFIinnovation.com

C21™ COOLER 21

Updated Shelves!



UPDATED FEATURES

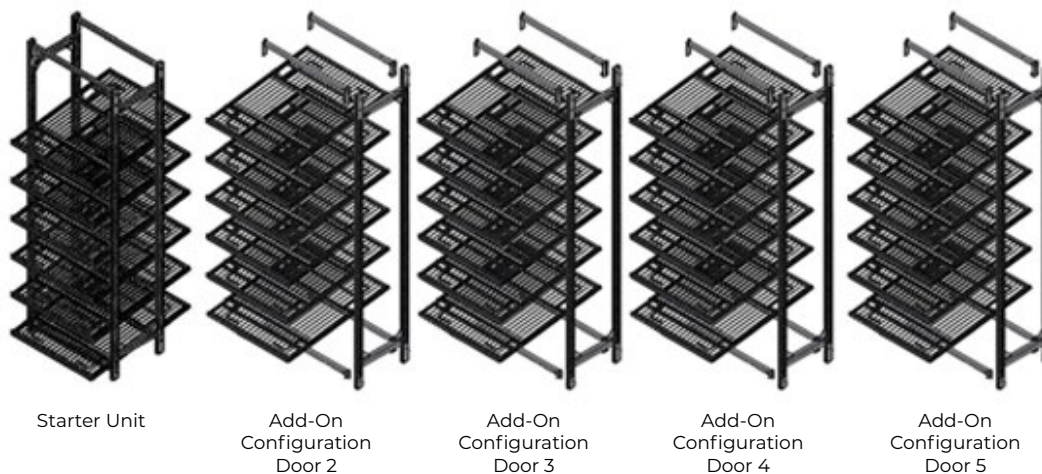
- Rivets used to connect all mechanical elements so there is no chance of losing hardware or dealing with loose shelf components
- Two depths available: 28" D and 36" D
- Aligns with 30" doors (Standard and French); Other widths available to accommodate a variety of glass door widths



For more information or to place an order contact Customer Service: 800-325-2823
4847 Park 370 Blvd. Hazelwood, MO 63042 · PFIinnovation.com

C21™ COOLER 21

Dynamic Cooler Shelving that Allows One Person to Adjust Fully Loaded Shelves



	Cooler Heights			Shelf Widths				Shelf Depths	
In-Market Dimensions:	81" and greater	86" and greater	91" and greater	Cooler Door Widths				28"	36"
				24"	26.75"	28.75"	30.25"		
C21 Product Dimensions: *Available Sizes	80"	85"	90"	Shelf Widths				28"	36"
				22.88"	25.63"	27.63"	29.13"		

*May require minimum order quantities and standard lead-time

How to Order

You need one starter section following every door jam. All other doors in that section are add-ons. Measure door widths according to nominal door width.

Popular Accessories

Additional Shelves: Six shelves come standard with every door. The average C21 customer uses 7.5 shelves per door -- to order additional shelves contact our sales team.

Optional Wall Bracket (CG21-7860-Kit): Provides additional stability by securing C21 to the wall. Recommended when placing less than three units together.

Optional Price Tag Molding (CG21-8047): C21 comes standard with metal channels on the front and rear of every shelf. Add optional plastic price tag molding to these channels to improve pricing and messaging area for customers.

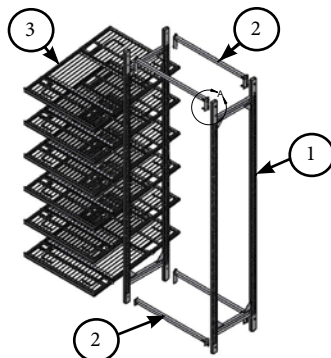
Merchandising Systems: Contact Sales team for Glide and Roller Merchandising options.



For more information or to place an order contact Customer Service: 800-325-2823
4847 Park 370 Blvd. Hazelwood, MO 63042 · PFIinnovation.com

C21™ COOLER 21

Dynamic Cooler Shelving that Allows One Person to Adjust Fully Loaded Shelves



Item No.	Description
1	Uprights
2	Cross Braces
3	Shelf

Shipping Chart is based on a 6-door configuration

Shipping Information			Starter Unit		Add-On Config	
Uprights	Contains 2 Uprights		Units per Carton		Units per Carton	
Upright Height	Carton Dimensions* D" x W" x H"	Carton Weight	2	Cartons/Door	1	Cartons/Door
80"	18.5" x 81.75" x 2.5"	38 lbs		1		1
85"	18.5" x 86.25" x 2.5"	40 lbs		1		1
90"	18.5" x 91.75" x 2.5"	42 lbs		1		1
Cross Braces	Contains 4 Cross Braces & Hardware		Units per Carton		Units per Carton	
Cross Bar Width	Carton Dimensions* D" x W" x H"	Carton Weight	4	Cartons/Door	4	Cartons/Door
24"	5.75" x 24.5" x 4.75"	6.3 lbs		1		1
26"	5.75" x 27.25" x 4.75"	6.7 lbs		1		1
28"	5.75" x 29.25" x 4.75"	7.1 lbs		1		1
30"	5.75" x 31" x 4.75"	7.5 lbs		1		1
Shelves	Contains 2 Shelves/ctn		Units per Carton		Units per Carton	
Shelf Size	Carton Dimensions* D" x W" x H"	Carton Weight	2	Cartons/Door	2	Cartons/Door
24"W x 28"D	28" x 24.5" x 3"	28 lbs		3		3
26"W x 28"D	28" x 27" x 3"	30.7 lbs		3		3
28"W x 28"D	28" x 29" x 3"	34.05 lbs		3		3
30"W x 28"D	28" x 31" x 3"	35.6 lbs		3		3
24"W x 36"D	37.5" x 25" x 2.5"	32 lbs		3		3
26"W x 36"D	37.5" x 27.25" x 2.5"	33.63 lbs		3		3
28"W x 36"D	37.5" x 30" x 2.5"	37.25 lbs		3		3
30"W x 36"D	37.5" x 31.5" x 2.5"	38.5 lbs		3		3

*Carton dimensions are approximate

Note: -The equivalence of a starter unit and 5 add-on doors can generally be shipped on one skid. Quantity may vary by door and shelf sizes.
 - 6 doors per skid / 26 skids per truck / 156 doors per 53' truck



For more information or to place an order contact Customer Service: 800-325-2823
 4847 Park 370 Blvd. Hazelwood, MO 63042 · PFIinnovation.com