

2023

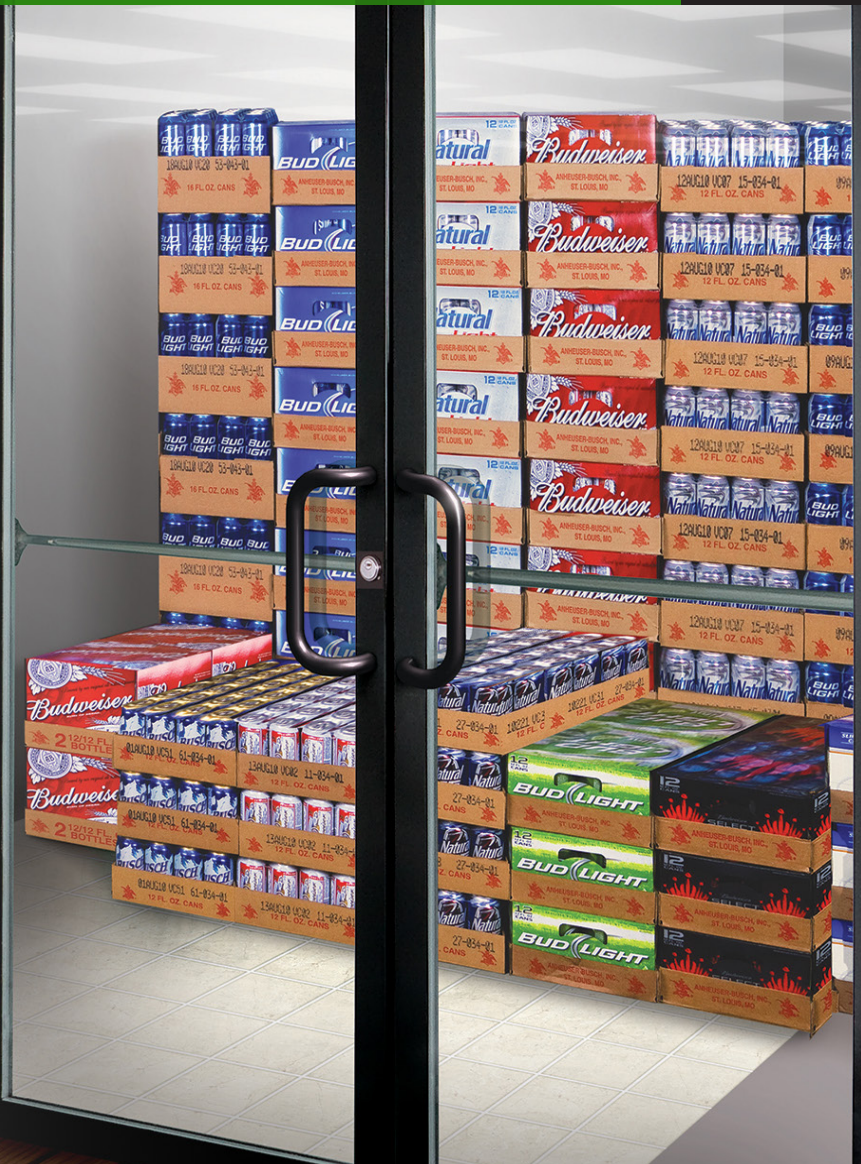
Kodiak<sup>®</sup> | Super Duty Pass-Thru Door

2017  
**DOE**  
COMPLIANT

BEER CAVES

**Kodiak beer cave doors are Tough, Versatile and made to last!**

**Cost-Efficient Ownership and Operation**



Anthony's Kodiak doors are the most durable and reliable beer cave doors you can have. If your business requires Pass-Thru doors that can withstand heavy traffic, the harshest of environments and daily abuse, the situation demands you install Kodiak Super Duty.

Kodiak's strong life construction and efficient energy insulation ensure long life and cost-effective operations for one of your most highly tracked areas in the store. Kodiak doors are available in a variety of configurations to fit a wide range of installation.

**HIGH TRAFFIC BEER  
CAVE DOORS  
ENGINEERED FOR  
ABSOLUTE STRENGTH**

 **Anthony<sup>®</sup>**

BEER CAVES

Kodiak's Pass-Thru cooler doors are easy to install and engineered for high traffic and long life. The robust, durable design can withstand years of use and tough handling by customers. From convenience stores to large retailers, Kodiak doors are the superior choice for your store operations.

**Applications:**

- Walk-In Coolers
- Beer Caves

**Standard Finish Options:**

- Black
- Satin Silver

**Standard Handle Options:**

- Offset Door Handle in Black
- Offset Door Handle in Satin Silver

**Standard Features:**

- 75°F, 55%RH ambient/35°F Walk-In Anti-Condensate Sweat Protection
- Push Bar
- Self Closing
- Hydraulic Door Closure
- 2-Pane Non-Heated Low-E Glass with Argon Gas
- Industrial Grade Cylinder Lock with Internal Thumb-lock
- Top & Bottom Flush-bolt Locks Standard with Double Doors



Kodiak Electronic Auto Lock



Industrial Grade Cylinder Lock



Hydraulic Closure

**Options:**

- Kodiak Electronic Auto Lock\*
- 10" tall Aluminum Diamond Pattern Kickplate

\*Kodiak Auto Lock Option comes standard with two Auto lock mechanisms fully integrated per door. Kodiak Auto Lock Option is In addition to Standard Industrial Grade Cylinder Lock.

| SPECIFICATIONS | SIZE    | NET OPENINGS      | AMPS (Total) | Energy Consumption (kWh/Day) |
|----------------|---------|-------------------|--------------|------------------------------|
| SINGLE         | 36 x 81 | 41" x 81-1/4"     | 0.73         | 1.93                         |
|                | 36 x 84 | 41" x 84-1/4"     | 0.75         | 1.98                         |
| DOUBLE         | 36 x 81 | 77-7/8" x 81-1/4" | 1.23         | 3.25                         |
|                | 36 x 84 | 77-7/8" x 84-1/4" | 1.28         | 3.38                         |



Top Flushbolt Lock



Integrated Push Bar



Lower Hinge



three ways to order today

go to: [www.anthonyintl.com](http://www.anthonyintl.com)  
email: [sales@anthonyintl.com](mailto:sales@anthonyintl.com)  
call: 800-772-0900